

# Potline Operator

12 hour rotation | Job class: 24  
Seniority Group: A

## MAIN RESPONSIBILITIES

Ensure optimal production of aluminum by operating a potline in order to provide the casting center with hot metal. Transfer PTA, TMA or other reduction crane using transfer granty.

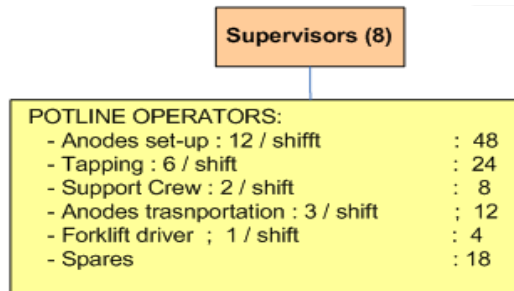
## TOOLS AND EQUIPMENT

- Alpsys Micro-Pot and ipot
- Pot chart
- Forklift
- Multipurpose truck (MECFOR) tow, traditional and rotary
- ATV (anode transport vehicle)
- Tennant sweeper
- Electric truck (Motrec),
- Pot tending assembly (PTA)
- Miscellaneous and tapping assembly (TMA)
- Lifting beam for metal tapping
- Tilting table
- ABRF (anode beam raising frame)
- Transfer gantry
- Mobile girders and retractable bumpers
- Measuring device such as PML (portable measurement logger) and microflex
- Probes for measuring devices
- Voltmeter
- Infrared pyrometer
- Pneumatic tools
- Bath and metal sampling tools
- Ladles
- Scrapers
- Divers slings (CAFD, slabs, etc.)
- Cart for blowers
- Bath temperature probe and measuring device
- Anode connectors
- Superstructure ladder
- Emergency carts
- CAFD cassettes or trailer
- Mobile platform
- Storable platform
- Rolling ladder
- Bath and metal measurement gauge
- Sampling box
- Hoses
- Aluminum triflouride hoppers
- Pots
- Crucible ejectors
- Wedge launder and extractor
- Divers small tools (ratchet, broom, etc)
- Software: Outlook, RTBS, Khronos time-keeping system
- Pick-up trucks

## RELATIONSHIP TO OTHER JOBS IN THE WORK SECTOR:

Pot line operators, Measure Operators , GTC, Bath treatment, Potlining, PTA/reduction maintenance and crucible centre, Maintenance non RTA, Casting, start-up / pot prep, non RTA

## WHAT DOES MY TEAM LOOK LIKE?



## SPECIAL REQUIREMENTS?

- Frequent upper body movement
- Frequent walking
- Respiratory protection required
- Special visual requirements

C O R R E S P O N D I N G

# Carbon Driver

12 hour rotation | Job Class: 24  
Seniority Group: C

## MAIN RESPONSIBILITIES

Transport green anodes from APP to North Anode System. Deliver crush carbon material from carbon recycling center to south storage silos. Delivery of alumina to/from FTC. Removal of FTA dust from ABF to carbon south silo. Transport of packing coke from south silos to ABF. Plus, driving duties.

## TOOLS AND EQUIPMENT

- Anode Tractor and Trailer unit
- Powder Tanker for Alumina
- Powder Tanker for Crush carbon
- Amplirol Trailer and Container
- General vehicles: forklift, electric truck
- Software: Lotus Notes, Maximo, etc
- Stacking Crane (2)

### WHAT DOES MY TEAM LOOK LIKE?

Your team has 10 ARS driver operators

### RELATIONSHIP TO OTHER JOBS IN THE WORK SECTOR:

Alumina Service, garage maintenance  
ABF, APP, Coke Cal, Rodding, maintenance,  
non-RTA.

DO YOU HAVE ANY QUESTIONS? Please write them down.

NEW

# Lube Serviceperson | Carbon

8 hour dayshift | Job Class: 24  
Seniority Group: C

## MAIN RESPONSIBILITIES

- Lubrication of the systems (new and old in APP/CC)
- Lubrication of the new systems in Carbon north (ABF/ARS/CRC/BPP)

## TOOLS AND EQUIPMENT

- |   |  |
|---|--|
| <ul style="list-style-type: none"> <li>- Van</li> <li>- Forklift</li> <li>- Vice grip pliers</li> <li>- Socket set</li> <li>- Pipe wrench</li> <li>- Allen wrench</li> <li>- Combination wrench</li> <li>- Screwdriver</li> <li>- Grinder</li> <li>- Drill</li> <li>- Bearing Puller</li> </ul> | <ul style="list-style-type: none"> <li>- Files</li> <li>- Tape measure</li> <li>- Air powered lubricators</li> <li>- Air pump</li> <li>- Barrel pump</li> <li>- Hoist</li> <li>- Barrel lifter</li> <li>- Pallet lifter</li> <li>- Oil buckets</li> <li>- Grease Pails</li> <li>- Funnels</li> </ul> |
|---|--|

## WHAT DOES MY TEAM LOOK LIKE?

Lubes (2)

Your team is 2 Carbon Lubes

## RELATIONSHIP TO OTHER JOBS IN THE WORK SECTOR:

APP, Coke Cal, Baking, Rodding  
Maintenance group: millwrights/electricians

DO YOU HAVE ANY QUESTIONS? Please write them down.

**C O N T I N U I N G**

# Anode Baking Furnace (ABF) Operator

12 hour rotation | Job Class: 24

Seniority Group: C

## MAIN RESPONSIBILITIES

Deal with baking of anodes by operating the furnaces and, subsequently, forward them to anode rodding.

## TOOLS AND EQUIPMENT

- Interfaces Plant Scape, Panel View and Process Book
- Dust collectors
- Electric hoist
- Crane attachment
- Lift truck
- Electric truck (Motrec)
- Tennant sweeper
- Stacking crane
- Overhead cranes (FTA)
- Core drill
- Scrubbers FTC
- Flue baffle
- Exhaust Ramps
- Temperature & Measuring ramps
- Burner ramps
- Blowing Ramps
- Single tong grab
- Roller conveyor
- Cleaning station
- Buckets
- Central vacuum
- Pallet truck
- Hammer drill
- Refractory inspection ramp.
- Furnace lid cart / buggy
- Coke crane adapter
- Bag changing clamp
- Exhaust Ramp scraper
- Various tools
- Software : Lotus Notes, Maximo and Khronos time-keeping system

### WHAT DOES MY TEAM LOOK LIKE?

Your team has 24 ABF operators

### RELATIONSHIP TO OTHER JOBS IN THE WORK SECTOR:

Alumina Service  
Refractory, Rodding, APP, Carbon drivers, maintenance, non-RTA.

### SPECIAL REQUIREMENTS?

Special visual requirements  
Respiratory protection required

NEW

# Flue Wall Maintainers

12 hour rotation | Job Class : 24  
Seniority Group: C

## MAIN RESPONSIBILITIES

Maintain the condition of the ABF refractory.

## TOOLS AND EQUIPMENT

- Electric hoist
- Crane attachment
- Lift truck
- Electric truck (Motrec)
- Tennant sweeper
- Single tong grab
- Buckets
- Central vacuum
- Flue Wall Elevator platform
- Flue wall maintenance platform
- Flue wall straightener
- Flue wall demolition grab
- Refractory Fibre
- Respirator
- Water mixer
- Pallet truck
- Coke crane adapter
- Various tools
- Software : Lotus Notes, Maximo and Khronos time-keeping system

## WHAT DOES MY TEAM LOOK LIKE?

Your team has 10 flue wall operators

## RELATIONSHIP TO OTHER JOBS IN THE WORK SECTOR:

ABF, maintenance, non-RTA.

## SPECIAL REQUIREMENTS?

Physically demanding  
Respiratory protection required

NEW

Previously Rodding (Cold Side) | Butt and Bath Operator

# ARS Cold Side Operator

12 hour rotation | Job Class: 24  
Seniority Group: C

## MAIN RESPONSIBILITIES

Operate the equipment to treat the butts and bath coming back from electrolysis. That includes managing the pallet storage building, to allow reduction personnel to collect pallet of rodded anode and empty bath bin and operate also the ancillary equipment located in the carbon recycling area and the bath treatment area.

## TOOLS AND EQUIPMENT

- Hydraulic pallet truck
- Lift truck
- Pick-up truck
- Software: Maximo, LPM, Lotus notes, Util, Dashboard
- Computer station
- Floor sweeper
- Electric truck (Motrec)
- Anode Transfer Vehicle (ATV)
- Small Payloader

## SPECIFIC DISTINCTIVE TASKS

- Operate:
- Load/Unload station
  - Bath Removal machines (pre-break and finishing)
  - Butt Shotblast
  - Butt Stripping machine
  - Thimble Stripping station
  - Thimble Cleaning system
  - Rod Inspection
  - Carbon Recycling system (with crushers)
  - Bath Processing system (with Rotary Breaker and HDPS Transfer system)

## WHAT DOES MY TEAM LOOK LIKE?

Your team has:  
36 ARS – Cold side and

## RELATIONSHIP TO OTHER JOBS IN THE WORK SECTOR:

APP, carbon drivers  
Reduction department

## SPECIAL REQUIREMENTS?

Respiratory protection required, Frequent walking and stair climbing

**NEW**

# ARS Hot Side Operator

12 hour rotation | Job Class: 24  
Seniority Group: C

## MAIN RESPONSIBILITIES

Operate the equipment in the rodding section to produce rodded assemblies

## TOOLS AND EQUIPMENT

- Hydraulic pallet truck
- Lift truck
- Pick-up truck
- Software: Maximo, LPM, Lotus notes, Util, Dashboard
- Computer station
- Floor sweeper
- Electric truck (Motrec)
- Small Payloader

## SPECIFIC DISTINCTIVE TASKS

- Operate:
- Stem Cleaning system
  - Pin Dipping & Drying system
  - Anode Conveyors
  - Studhole burner system
  - Induction Furnace (3)
  - Mating Station
  - Pouring Station
  - Ladle pre-heating systems

## RELATIONSHIP TO OTHER JOBS IN THE WORK SECTOR:

APP, carbon drivers  
Reduction department

## WHAT DOES MY TEAM LOOK LIKE?

Your team has:  
  
12 Rodding Hot Operators

## SPECIAL REQUIREMENTS?

Occasional heavy lifting

NEW

# Sheet Operator

12 hour rotation | Job Class: 24  
Seniority Group: B

## MAIN RESPONSIBILITIES

Part of a team producing remelt and fabrication of ingot. This includes hot metal transportation; treatment; furnace batching; metal preparation; casting; sawing; packaging and shipping; preparation, set up and minor repair on casting and related equipment.

## TOOLS AND EQUIPMENT

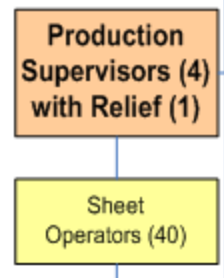
- Molds
- Small tool kit
- Skim poles
- Rakes
- Remote crane
- Chain slings
- Furnaces
- Troughs
- Basins
- Forklift
- Ovens
- Forklift charger
- LIMCA
- Saw
- Strapper
- Overhead Cranes
- Casting machines
- Scale
- Alloy charger
- Impact wrench
- Chisel
- Air chisel
- Jackhammer
- Broom
- Shovel

## RELATIONSHIP TO OTHER JOBS IN THE WORK SECTOR:

Hot metal drivers  
Driver (finished product)

## WHAT DOES MY TEAM LOOK LIKE?

You report to the Production Supervisors And have 40 operators In your team.



DO YOU HAVE ANY QUESTIONS? Please write them down.

C O N T I N U I N G



# Wharf Operators

12 hour rotation | Job Class: 24  
Seniority Group: B

## MAIN RESPONSIBILITIES

Transports finished product from cast house to port and rail yards. Stores metal for shipment. Operates cranes, trucks, dump trucks. Operates heavy equipment related to the unloading for bulk materials. Stows finished product in ships holds. Check metal for minor damages. Performs snow clearing and applies salt and sand as required.

## TOOLS AND EQUIPMENT

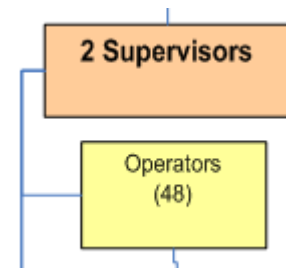
- 20T air break forklift
- Forklift
- Dump Truck
- Sweeper
- Water hose
- Small hand tools
- Rail cars
- Pliers
- Vacuum ship unloader
- Mobile hopper
- Radios
- Unitizing machines
- Strapping Tools
- Conveyors
- Ships cranes
- Port cranes
- Super pack vehicle
- Port Straddle carrier
- Rail cars and rail car moves
- Front end loader

## RELATIONSHIP TO OTHER JOBS IN THE WORK SECTOR:

- Ships crew
- Ingot Chain Operator
- Sheet B

## WHAT DOES MY TEAM LOOK LIKE?

You report to the Wharf and Logistics Supervisors and have 48 wharf Operators in your team.



DO YOU HAVE ANY QUESTIONS? Please write them down.

C O N T I N U I N G

# Ingot Chain Operator

12 hour rotation | Job Class: 24 - Seniority Group: B

## MAIN RESPONSIBILITIES

Part of a team producing fabrication of ingot, cruce cleaners and hot metal transport. This includes hot metal transportation; treatment; furnace batching; metal preparation; casting; sawing; packaging and shipping; preparation, set up and minor repair on casting and related equipment.

Performs any duties necessary for the repair, rebuild, and adjustment of equipment related to the handling of molten metal.

Responsible for ensuring the molten aluminum is transported from the Pot rooms to the Casting Furnaces. Responsible to handle different Cast house bins and products

## TOOLS AND EQUIPMENT

- |                           |                           |                    |
|---------------------------|---------------------------|--------------------|
| • Crucible cleaner        | equipment                 | • Crucible stands  |
| • Vacuum System equipment | • Tapping syphons         | • Computer         |
| • Wrenches                | • Metal Transport Vehicle | • Automated siphon |
| • Pry bars                | • Molten aluminum         | equipment          |
| • Impact wrenches         | • Forklift                |                    |
| • Hoist                   | • Bins for Alf            |                    |
| • Crane controllers       | • TAC equipment           |                    |
| • Electrical pre heat     | • Crucible                |                    |

## RELATIONSHIP TO OTHER JOBS IN THE WORK SECTOR:

- Hot metal transport drivers
- Ingot chain operators
- Sheet B operators

## WHAT DOES MY TEAM LOOK LIKE?

You report to the Production supervisor/hot metal supervisor have 58 Ingot, Cruce & Hot Metal operators on your team

## SPECIAL REQUIREMENTS:

Special visual Requirements; Occasional stair climbing  
Occasional lifts and upper body movement  
Occasional walking

C O R R E S P O N D I N G

# Operator | Rail Operators

12 hour rotation | Job Class: 24  
Seniority Group: B

## MAIN RESPONSIBILITIES

Safely transfer of stock of the terminal railway

## TOOLS AND EQUIPMENT

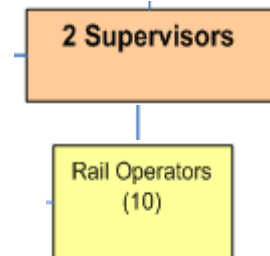
- Radios
- Brakes hoe
- Bars
- Wrenches
- Hammers
- Track tools
- Track mobile
- Loaders
- Strapping Tools
- Impact Wrench
- Cutting torch
- Snow Shovel

## RELATIONSHIP TO OTHER JOBS IN THE WORK SECTOR:

- Operator Sheet
- Operator Ingot Chain
- Operator Cruce Cleaners

## WHAT DOES MY TEAM LOOK LIKE?

You report to the Wharf and Logistics Supervisors and have 10 rail operators in your team.



DO YOU HAVE ANY QUESTIONS? Please write them down.

C O N T I N U I N G

# Electricians

12 hour rotation / 8 hour dayshift | Job Class: Trades  
Seniority Group: T

## MAIN RESPONSIBILITIES

Maintain and repair plant equipment following asset management best practices. Employ predictive and proactive methods to improve asset condition. Provide feedback to improve performance.  
Participate continuous improvement activities.  
Promote and participate in a zero harm culture.

## TOOLS AND EQUIPMENT

- Computer
- Personal tools as per trade tool list
- Shop tools
- Forklift truck
- Crane and lifting equipment
- Man lifts
- Pick up trucks | van
- Electric utility vehicles
- Spilt containment
- Safety equipment
- Work zone containment equipment
- **Electrical Testing equipment**

## WHERE ARE THERE ELECTRICIANS?

C O R R E S P O N D I N G

- Maintenance ORG:** E/M Maintenance | 3
- Maintenance ORG:** Automation Team | 4
- Reduction ORG:** PTA Maintenance | 4
- Reduction ORG:** Reduction Maintenance | 9

N E W

- Maintenance ORG:** Rebuild Shop | 2
- Maintenance ORG:** O/E Support | 5
- Maintenance ORG:** Reliability Team | 3
- Plant Services ORG:** Alumina Transport Team | 2

C O N T I N U I N G

- Carbon ORG:** Carbon Maintenance | 10
- Power Kemano ORG:** Power house maintenance | 10
- Casting ORG:** Casting & Wharf maintenance | 6

## RELATIONSHIP TO OTHER JOBS IN THE WORK SECTOR:

Interface with multiple operations and maintenance areas, Interface with warehouse personnel  
Member of multi skilled group

# Instrument Mechanic

8 hour dayshift | Job Class: Trades  
Seniority Group: T

## MAIN RESPONSIBILITIES

Maintain and repair plant equipment following asset management best practices. Employ predictive and proactive methods to improve asset condition. Provide feedback to improve performance.

Participate in continuous improvement activities.

Promote and participate in a zero harm culture.

## TOOLS AND EQUIPMENT

- Computer
- Personal tools as per trade tool list
- Shop tools
- Forklift truck
- Crane and lifting equipment
- Man lifts
- Pick up trucks | van
- Electric utility vehicles
- Spill containment
- Safety equipment
- Work zone containment equipment
- **Test, inspect, calibrate, repair equipment and associated components**

## WHERE ARE THERE INSTRUMENTAL MECHANICS?

C O R R E S P O N D I N G

- Maintenance ORG:** E/M Maintenance | 1
- Casting ORG:** Casting & Wharf Maintenance | 1
- Carbon ORG:** Carbon Maintenance | 2
- Maintenance ORG:** Rebuild Shop | 2
- Reduction ORG:** PTA Maintenance | 2

NEW

## RELATIONSHIP TO OTHER JOBS IN THE WORK SECTOR:

Interface with multiple operations and maintenance areas

Interface with warehouse personnel

Member of multi skilled group

**DO YOU HAVE ANY QUESTIONS? Please write them down.**

# Millwright

12 hour rotation / 8 hour dayshift | Job Class: Trades  
Seniority Group: T

## MAIN RESPONSIBILITIES

Maintain and repair plant equipment following asset management best practices. Employ predictive and proactive methods to improve asset condition. Provide feedback to improve performance.  
Participate in continuous improvement activities.  
Promote and participate in a zero harm culture. Work on mechanical / stationary equipment.

## TOOLS AND EQUIPMENT

- Computer
- Personal tools as per trade tool list
- Shop tools
- Forklift truck
- Crane and lifting equipment
- Man lifts
- Pick up trucks | van
- Electric utility vehicles
- Spill containment
- Safety equipment
- Work zone containment equipment
- **Laser alignment equipment**
- **Non destructive testing equipment**
- **Portable power tools**
- **Welding and cutting equipment**

## WHERE ARE THERE MILLWRIGHTS?

C O R R E S P O N D I N G

**Maintenance ORG:** E/M Maintenance | 6

**Maintenance ORG:** Rebuild Shop | 6

**Reduction ORG:** PTA Maintenance | 9

**Reduction ORG:** Maintenance | 9

**Plant Services ORG:** Alumina Transport Team | 4

**Carbon ORG:** Carbon Maintenance | 20

N E W

**Maintenance ORG:** O/E Support | 6

**Maintenance ORG:** Reliability Team | 3

C O N T I N U I N G

**Power Kemano ORG:** Power house maintenance | 8

**Casting ORG:** Casting & Wharf maintenance | 9

## RELATIONSHIP TO OTHER JOBS IN THE WORK SECTOR:

Interface with multiple operations and maintenance areas  
Interface with warehouse personnel  
Member of multi skilled group

# Welder

8 hour dayshift | Job Class: Trades  
Seniority Group: T

## MAIN RESPONSIBILITIES

Maintain and repair plant equipment following asset management best practices. Employ predictive and proactive methods to improve asset condition. Provide feedback to improve performance.  
Participate in continuous improvement activities.  
Promote and participate in a zero harm culture.

## TOOLS AND EQUIPMENT

- Computer
- Personal tools as per trade tool list
- Shop tools
- Forklift truck
- Crane and lifting equipment
- Man lifts
- Pick up trucks | van
- Electric utility vehicles
- Spill containment
- Safety equipment
- Work zone containment equipment
- Set up and operate welding equipment
- Set up and operate cutting equipment
- Measure, cut and fabricate welding materials
- NDT and other inspection tasks
- Obtain and maintain required welding certifications.

## WHERE ARE THERE WELDERS?

C O R R E S P O N D I N G

- Maintenance ORG:** Garage | 1
- Maintenance ORG:** E/M Maintenance | 2
- Plant Services ORG:** Alumina Transport Team | 1
- Carbon ORG:** Carbon Maintenance | 3

N E W

- Maintenance ORG:** O/E Support | 3
- Maintenance ORG:** Rebuild Shop | 2

C O N T I N U I N G

- Casting ORG:** Casting & Wharf maintenance | 1

## RELATIONSHIP TO OTHER JOBS IN THE WORK SECTOR:

Interface with multiple operations and maintenance areas  
Interface with warehouse personnel  
Member of multi skilled group

# Gas-Pipefitter

8 hour dayshift | Job Class: Trades  
Seniority Group: T

## MAIN RESPONSIBILITIES

Maintain and repair plant equipment following asset management best practices. Employ predictive and proactive methods to improve asset condition. Provide feedback to improve performance.

Participate in continuous improvement activities.

Promote and participate in a zero harm culture.

## TOOLS AND EQUIPMENT

- Computer
- Personal tools as per trade tool list
- Shop tools
- Forklift truck
- Crane and lifting equipment
- Man lifts
- Pick up trucks | van
- Electric utility vehicles
- Spill containment
- Safety equipment
- Work zone containment equipment
- Electrical Testing equipment
- Combustion analysis equipment
- Various methods of joining pipe
- Obtain and maintain gas ticket.

## WHERE ARE THERE GAS.PIPEFITTERS?

C O R R E S P O N D I N G

N E W

C O N T I N U I N G

**Maintenance ORG:** E/M Maintenance | 4

**Carbon ORG:** Carbon Maintenance | 3

**Maintenance ORG:** O/E Support | 1

**Casting ORG:** Casting & Wharf maintenance | 2

## RELATIONSHIP TO OTHER JOBS IN THE WORK SECTOR:

Interface with multiple operations and maintenance areas

Interface with warehouse personnel

Member of multi skilled group



# Sheet Operator

12 hour rotation | Job Class: 24  
Seniority Group: B

## MAIN RESPONSIBILITIES

Part of a team producing remelt and fabrication of ingot. This includes hot metal transportation; treatment; furnace batching; metal preparation; casting; sawing; packaging and shipping; preparation, set up and minor repair on casting and related equipment.

## TOOLS AND EQUIPMENT

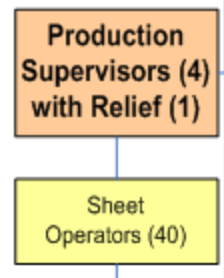
- Molds
- Small tool kit
- Skim poles
- Rakes
- Remote crane
- Chain slings
- Furnaces
- Troughs
- Basins
- Forklift
- Ovens
- Forklift charger
- LIMCA
- Saw
- Strapper
- Overhead Cranes
- Casting machines
- Scale
- Alloy charger
- Impact wrench
- Chisel
- Air chisel
- Jackhammer
- Broom
- Shovel

## RELATIONSHIP TO OTHER JOBS IN THE WORK SECTOR:

Hot metal drivers  
Driver (finished product)

## WHAT DOES MY TEAM LOOK LIKE?

You report to the Production Supervisors  
And have 40 operators  
In your team.



DO YOU HAVE ANY QUESTIONS? Please write them down.

C O N T I N U I N G

# Senior warehouse person

8 hour dayshift / 12 hour dayshift | Job Class: 24  
Seniority Group: C

## MAIN RESPONSIBILITIES

Receive, process, bin and issue warehouse inventory. Transport issued and returned materials within smelter site. Prepare shipments leaving smelter site. Perform inventory counts. Progression system to senior warehouseman

## TOOLS AND EQUIPMENT

- |   |   |
|---|---|
| <ul style="list-style-type: none"> <li>- Computer</li> <li>- Delivery van</li> <li>- Safety harness</li> <li>- Man box</li> <li>- Dispenser for cable</li> <li>- Stretch wrap dispenser</li> <li>- Cut-off saw</li> <li>- Chain and/or wire rope cutter</li> <li>- Fax machine</li> <li>- Photocopier</li> <li>- Walk behind sweeper</li> </ul> | <ul style="list-style-type: none"> <li>- Dyno marking system</li> <li>- High rise forklifts</li> <li>- Air hose conductivity tester</li> <li>- Pliers – Cutters</li> <li>- Strap machine</li> <li>- Screw drivers and wrenches</li> <li>- Pallet mover</li> <li>- Forklifts</li> <li>- Spill containment materials</li> <li>- Loading dock</li> <li>- Scales</li> </ul> |
|---|---|

### HOW DOES MY TEAM LOOK LIKE?

There are 10 warehouse workers

### RELATIONSHIP TO OTHER JOBS IN THE WORK SECTOR:

- Interface with multiple operations and maintenance areas
- Interface with purchasing and inventory control personnel
- Interface with delivery personnel

**DO YOU HAVE ANY QUESTIONS? Please write them down.**

**C O N T I N U I N G**